

EZblue Business Server

The All - In - One Server For Your Home And Business








Quick Start Guide

Version 3.8



- 1** EZblue Server Overview
- 2** EZblue Server Installation
- 3** EZblue Server Configuration
- 4** EZblue Magellan Desktop
- 5** Hamachi Remote Access
- 6** Web Server Setup
- 7** Support and FAQ

Contents

	EZblue Server Overview.....	3
	EZblue Server Installation.....	4
	EZblue Server Configuration.....	5
	EZblue Magellan Desktop.....	10
	Hamachi Remote Access.....	16
	Web Server Setup.....	18
	Support and FAQ.....	21

1

EZblue Server Overview

EZblue Business Server is a Linux powered server designed for the small and medium sized business. EZblue is a complete business server which provides all the features and functions needed to manage your business. It is very easy to set up and use. EZblue Business Server keeps your business up and running and saves you time and money by providing the following features:

- Centralized, secure server for storing and sharing your business critical data
- Back up and restore all your data files from one location automatically based on pre-scheduled intervals
- Built-in file server, web server, print server, VPN server, optional sync and mail Server.

Before You Begin:

Caution: Make sure to install the EZblue Server software on a **Dedicated** computer and **Not** on your PC. **Installing the EZblue trial software on your PC will completely delete all existing data.** You can use any IBM PC compatible computer that meets the following minimum system requirements:

Pentium III 500Mhz based system or faster.
256 MB or higher
CD-ROM Drive
10/100 Network Interface Card
10 GB or larger hard drive
VGA-based video card and VGA monitor
Optional 10 GB or larger backup drive or external USB drive



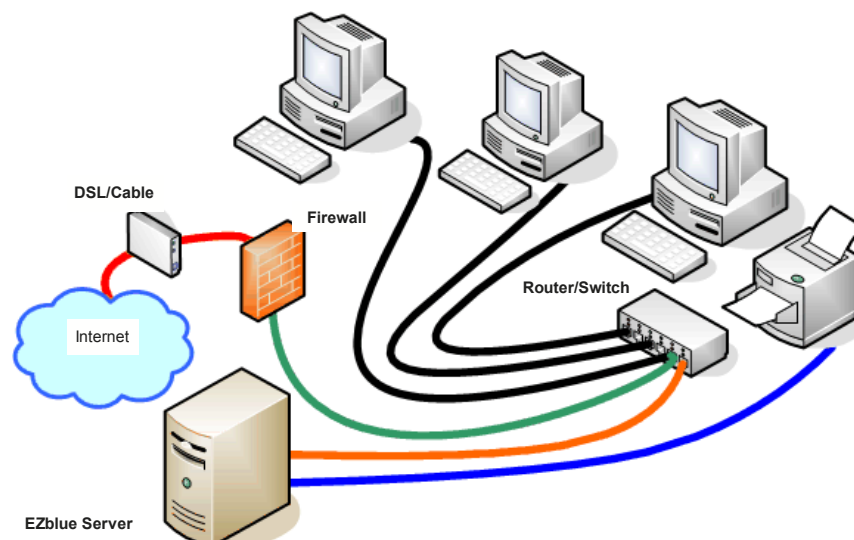
Do you have an old PC that you're thinking of parting with? Before you send it to the landfill, you may want to install the EZblue Business Server and put it to use. Our innovative software technology delivers a compelling reason to recycle outdated computers. By reducing the number of computers that would end up as electronic waste you can help protect the environment.



We strongly recommend that you use a router/switch rather than a hub. The use of a router switch greatly increases the security and the performance of your network.

Connecting Your Server

Connect your EZblue Server to your router/network using Ethernet cable (ex. The Orange Cable) as shown in the following diagram:



2

EZblue Server Installation

Step 1: Turn on the power to the **server** computer (not your PC but a computer **Dedicated** to be used as a server).

Step 2: First make sure that the computer is set to boot from the CD drive. This can be accomplished through the boot settings in the PC motherboard's BIOS. To be sure that your computer is set to boot from the CD ROM drive, you need to do the following:

A: Press Ctrl+Alt+Del all at the same time to restart your computer. Instructions will be displayed on the monitor indicating how to enter the computer BIOS setup. For further instructions, see your PC owner's manual.

B: Set the CD-ROM drive as the first boot device. Save the new setting and exit.

Step 3: Open the CD ROM drive and load EZblue Server Software CD Disk.

Step 4: Now restart the computer by pressing Ctrl+Alt+Del all at the same time. The computer will start loading the EZblue Server Software from the CD ROM drive. When the software is completely loaded, you will see the following message on the monitor:



Step 5: At this point, select, “install EZblue Server Software” or you may cancel and exit the installation process.

Step 6: Follow the instructions on the screen.

Step 7: When the server software is completely installed, you will be instructed to access and configure your server through your PC (make sure your PC and the EZblue server are connected to the same router/network).

A: First, start Internet Explorer or any other browser like Firefox

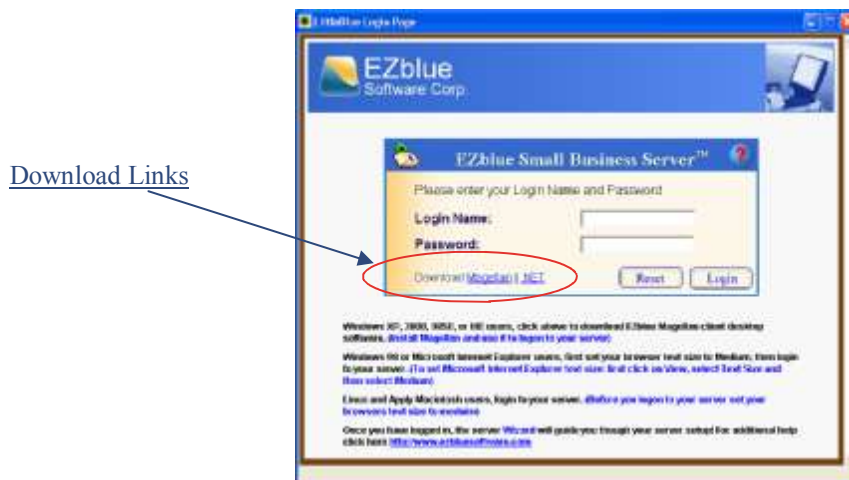
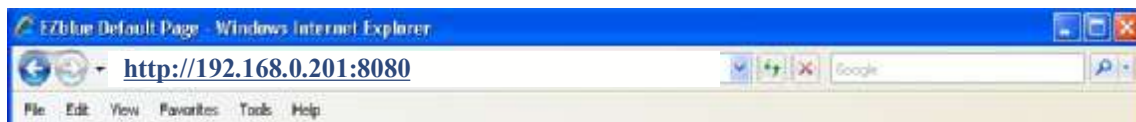
B: Set your browser text size to Medium (to set Internet Explorer text size: click on View, select Text Size and then select medium).

C: Type the server IP address that is displayed on the server's monitor. Example <http://192.168.0.201:8080> (make sure to add the 8080 port number as shown)

Your server is now ready to be configured. The server Wizard will guide you through the server configuration process. **See the following pages for server configuration.**

3 EZblue Server Configuration

Step 1: From another PC on the same network, open Internet Explorer browser. Enter the server IP as showing in the following example: (<http://192.168.0.201:8080> make sure to add the 8080) you will see the log on screen showing below. Note: your server actual IP is what is been displayed on the server monitor.



Download Links

Hint Windows Vista, XP, and 2000 users: Before you login, download Magellan and the Microsoft .Net software from the links shown in the screen image above. Install the Microsoft .NET software first then install Magellan on your computer before you login to the server. This will make it easy for you to access your server and save you a step later. After you finish continue to the next step.

Step 2: Enter “admin” for the login Name and the Password you selected during the install. We recommend picking a complex or difficult to guess admin password. (admin account is for managing the server only.) Add a second user account with admin privilege to use the next time you login.

Step 3: The server Wizard will guide you through the server configuration process. Follow the instructions on the screen.



EZblue Server Configuration

 : Set the server name, your network workgroup name, the date and time.



EZblue Wizard [X]

1 **Server Global Settings**

It is important to set your Server Name and Workgroup Name. Make any needed changes below and click **Apply**.


Server Name:


Workgroup Name:

Date: ... Time Zone:

Time: : Daylight Savings

Make any needed changes to your Servers Name, Workgroup, Date and Time before pressing **Apply**

 : Enter user account information below. Enter name and password for each user in your group/office. Only users with account on the server will be able to access the data stored on the server. Users with “**Admin Access**” privilege can manage the server and mount the folders. Add at least one user account with admin privilege. Next time you login to the server, use the new user/admin account instead of the **admin** account .

 (“**admin**” account is a special account to manage the server.) You will not be able to use it to mount the server folders when using it with the Magellan Desktop program. You need to add at least one user/admin account with “**Admin Access**”. Example: Mike57) Using the new user/admin account with the Magellan program you can both manage the server and mount your folders.



EZblue Wizard [X]

2 **Add Users to the Server**

Now add users to your server. Fill in the form below and click **Apply** to add a user. When done adding users click **Next**.

There are currently **1** user(s) on this server.

Full Name:

Login Name:

Email / Settings Drive:


Admin Access: No Yes

Password:

Confirm Password:

Admin Access 

EZblue Server Configuration

 : Enter the name for each folder that you want to keep on the server and click Apply. Add as many folders as you think you may need and when finished click Next. You can always add or delete folders later from the server Dashboard.

 **EZblue Wizard** 

 **Add Folders to the Server**

Now add folders to the server. Folders can be accessed through the Magellan Desktop or Network Neighborhood.

Fill in the form below and click **Apply** to add a folder. When done adding folders, click **Next**.

There are currently **5** folder(s) on this server.

Folder Name :

Folder Disk:

 **EZblue Wizard** 

 **Congratulations!**

You have now completed configuring your server. To access your network folders use the Magellan Desktop or Network Neighborhood.

Your EZblue Linux Server:
Server Name: **ezblue_951DC18A** Server Workgroup: **WORKGROUP**
There are **2** users on this server.
There are **5** folders on this server.

Please verify the information above. If there is a problem with the server name or you would like to add more users or folder, please click **Back**.

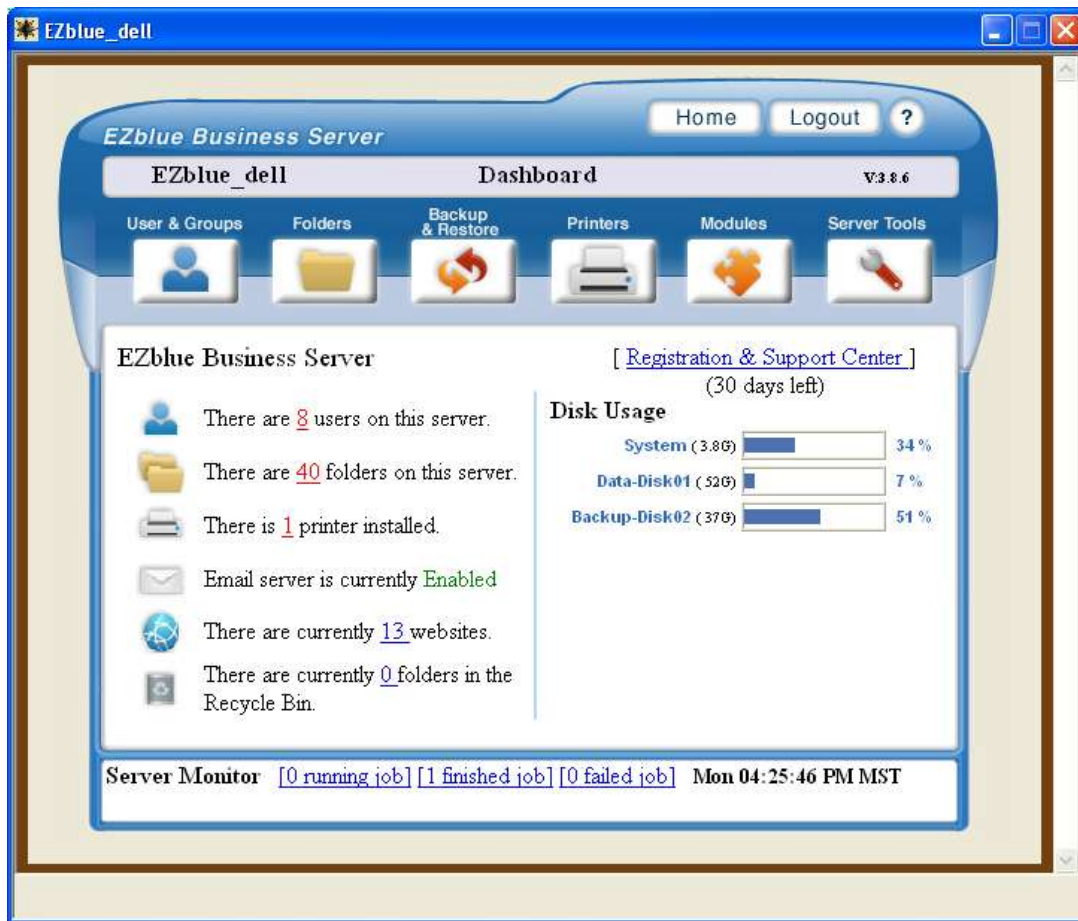
In the future you can access this wizard by clicking the Server Tool button and selecting the 'Rerun Setup Wizard' link. Click **Done** to return to the Dashboard.

Congratulations you have completed your server configuration!
Click "Done" to enter the server Dashboard.



EZblue Server Dashboard Screen Shot

The server Dashboard gives you complete control of your server!



Hint Windows Vista, XP, and 2000 users

If you have already installed Magellan as we suggested in section 3 of this guide, you can skip the next step and go to “starting and using Magellan” otherwise, please read the following:

Now you are ready to use your server; but before you do that, we recommend that you download and install EZblue Magellan Desk Top program for each client computer on your network. You may need to install Microsoft .NET software first before you install the Magellan program. You can download both Magellan and the .NET programs from the server login screen. See next page for more information

Install Magellan on each computers that will be accessing the server. EZblue Magellan is designed to help you find the EZblue server on your network and manage your folders without the need to use your IE browser or “My Network”.

You can also download EZblue Magellan, after you configure your server from “Server Tools” in the Dashboard image shown above.

Click on the “Download Magellan” link. The download will start in few seconds. Once it is complete, install Magellan on your computer and follow the steps outlined in the next few pages of this guide..

Continued on the next page.

4 EZblue Magellan Desktop

What is EZblue Magellan Desktop?

EZblue Magellan desktop is a software program that enables users running Microsoft Windows™ Vista, XP, and 2000 to have an easy and fast access to their files and folders stored on the EZblue server. Magellan provide additional tools to help you manage the server from any computer on the network and it even takes a backup snapshot of ‘My Document’ folder.

How Does Magellan work?

When you first start Magellan it scans your network to find any EZblue Server that you may have on the network. Once it finds a server then it asks you if you have an account on this server. If you do have an account you can enter your name and password and Magellan logs you in to the server and load (map) your server folders in a small window on your computer desktop.



Magellan Desktop Menu Description:

After you install Magellan you can start it by clicking on the Magellan star icon located on your computer desktop. You will notice a small Star icon on the bottom right hand side of your start bar.

[Right clicking](#) on the icon will display the Magellan main menu showing here.

Magellan Main Menu

Show Magellan Desktop
Show All EZblue Servers Manage All EZblue Servers
Manage Network Folders Disconnect Network Folders My Document Snapshot
Check for Update About Magellan
Reset Settings
Exit

A- Show Magellan Desktop: This option will display the small Magellan desktop window if it is closed.

B- Show All EZblue Servers: This option will display a list of all the EZblue servers that are connected to your network.

C- Manage All EZblue Servers: This option will display the logon screen so you can logon to your server and access the server Dashboard.

D- Manage Network Folders: This option will display a list of all the folders that are available for you to access . Use this option when you have added or deleted a folder from the server. Using this command you can remap the folder list and assign them a new drive letter or un map them.

E- Disconnect Network Folders: When Magellan start it maps the network folders and display them in the Magellan desktop. If you wish to disconnect these you can use this option. An example of that if you leave your computer, and you don't wish to keep these folders displayed . The command will change back to Connect Network Folders so you can use it to connect the folders again.

F- My Document Snapshot: This is one of best features of the Magellan program. Using this option you can have Magellan take a snapshot of Windows My Documents folder on your computer, and copy it's content to a folder you select on the server. You can set the time and select the content that you would like to backup to the server. Magellan will run this command automatically for you. The first time it runs it will copy the content and every time after that it will only copy what has been changed since the last run. It is like having your own automated backup software. See the next page for additional information on My Document Snapshot.

G- Check For Update: Use this option to see if you have the latest version of Magellan.

H- About Magellan will display the current version of the software.

I- Reset Settings: Magellan stores user's configuration on the client computer and on the server for each user account. To reset the configuration stored on the server; from the server dashboard click on **Users & Group** button click on the user name, check “**Reset Magellan Configuration**” and click apply. Use this command if you want Magellan to make a new configuration for that user.



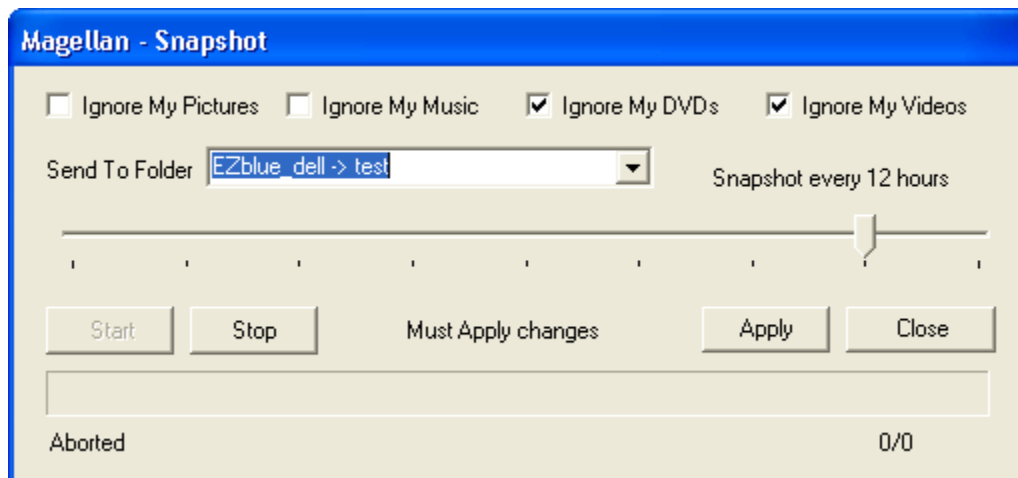
4 EZblue Magellan Desktop

What is Magellan My Document Snapshot and How do I use it?

Magellan My Document Snapshot is a built in automated backup feature that makes it easy for you to backup your Windows My Documents folder to the server. It is like having your own automated backup software. Every PC running Windows™ comes with a pre installed folder called My Documents. Inside the My Documents folder there are additional folders like My Pictures etc. When you use the Magellan My Document Snapshot feature it will take a snapshot of the My Documents folder on your PC and copy its content to a folder you chose on the server. You can set the time and select the content that you would like to backup to the server. Magellan will run this command automatically for you based on the time you selected. The first time it runs it will copy the My Documents folder content to the folder you specified on the server. Thereafter every time it will only copy what has been changed since the last run.

Starting the Magellan My Document Snapshot

Start Magellan and select My Document Snapshot from the main menu. A control panel as showing in the image below will open. Set the Snapshot options. For the Snapshot to work you must keep the Magellan Desktop running.



Configuration Example of the Magellan My Document Snapshot

In the above image a user has set up the Snapshot to backup his My Documents folder Data files, Pictures and Music but to ignore the DVDs and Movies files. He selects a folder called test on his server to store the data, and he set the program to run every 12 hours.

When the Snapshots complete the backup a folder will be created inside the folder test called Snapshot. Every time the Snapshot program runs it will make another folder with a time and date stamped on it and only the changes that were made to the original backup. By doing it this way it will keep the disk space used on the server to a minimum.

The server admin can set the number of Snapshot kept on the server for each user by changing the user account setting.

Please see the next pages for downloading and installing the Magellan Desktop.

4 EZblue Magellan Desktop

Downloading and Installing Magellan Desktop

There are two options to download EZblue Magellan Desktop program, you can click on the link from the main logon screen as shown below or from the Dashboard Page by selecting “Server Tools” and clicking on the Download Magellan link.

Click on the “Download Magellan” link. The download will start in few seconds. Once it is complete, install Magellan on your computer and follow the steps. (You may need to download the Microsoft .NET frame work to run Magellan if it is not already installed on your computer). We recommend that you download and install EZblue Magellan Desk Top software for each client computer on your network.

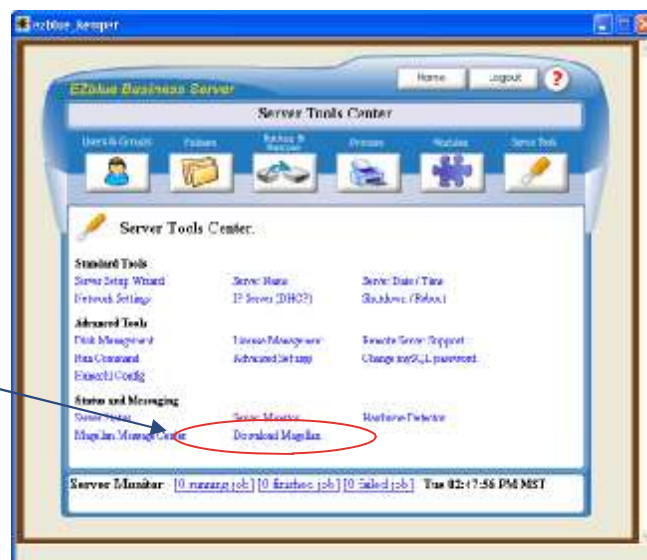
Download Option 1

Download Links



Download Option 2

Download Links



Continued on the next page.

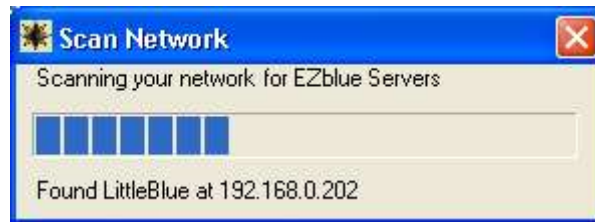


EZblue Magellan Desktop

EZblue Magellan desktop software enables Windows Vista, XP, and 2000 users to have fast and easy access to their files and folders stored on the EZblue server. In addition to managing your files and folders on the server, EZblue Magellan is an excellent tool for backing up your my document Folder and for accessing and managing the server from your computer desktop.

Step 1: Starting and using Magellan

To start Magellan click on the Windows **Start** button, select **All Programs** open the “EZblueSoftware” folder and click on the **Magellan icon**, Magellan will start and scan your network for the EZblue server . See image bellow.

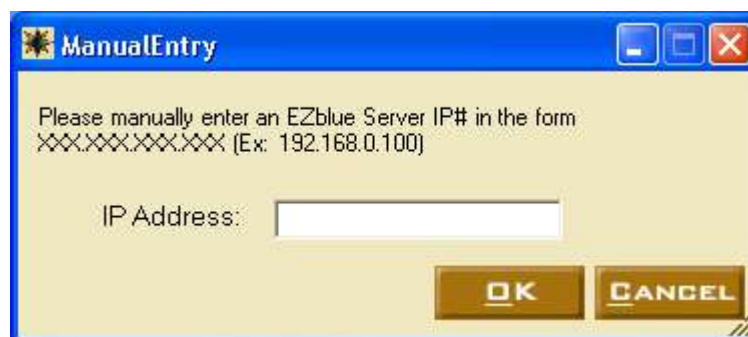


Once Magellan find the EZblue server it will ask you if you have an account on it. Click yes.



Magellan Can't Find the Server

In some cases Magellan scan the network but can't find the server. This is due to several conditions such as you are on a VPN remote access and not part of the local network. To connect to the server you will need to enter the server IP address manually as showing in the following window.



Continued on the next page.



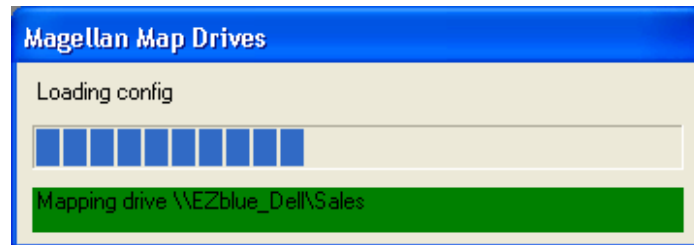
EZblue Magellan Desktop



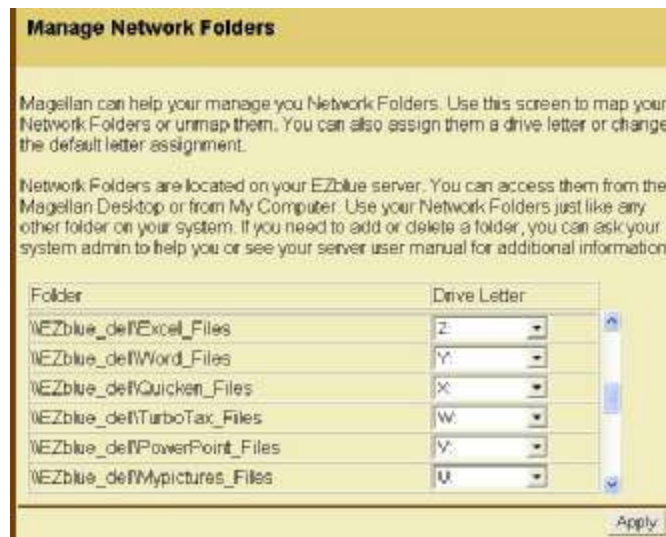
Enter your login name and password. If this your first time to login to the server you use “**admin**” for the login name and the password you entered during the install. It is very important to add another user account to the server with admin privilege. To add another user account login to the server, click on user and groups but- ton from the Dashboard. Click Add New User and check Yes for Admin Access.. Next time you login to the server with Magellan use the new name and password. **Only users with admin privilege can manage the server and map the folders.** All other users can map their folders but they can’t manage the server.



Once you logged in successfully Magellan will attempt to load your configuration and map your folders on your computer desktop.



Step 2: Once Magellan finds all the folders on the server, it will map them by assigning a letter to each folder. If you wish to change the letter assignment, you can do it from the following screen. Click “Apply ” when done.



Continued on the next page.



EZblue Magellan Desktop

Once you clicked on the Apply button in the “Manage Network Folders” page, a small Magellan Desktop will display on your computer screen. You can adjust the size and the placement of the Magellan desktop like any other window. See the example image below.



Click on any of the folders in your Magellan desktop to open it. Use them just like any other window’s folders to store you data. You can click on the folder icon to open it, drag and drop items into the folders. These folders are stored on your EZblue server. Users with account on the server can access these folders.

Remote Access

Remote users can also access their server folders over the Internet provided you (the admin) have configured the Hamachi Remote Access Module in the Server Tools. To configure the Hamachi module select a name for your network and enter a password . [See the Hamachi Remote Access Setup in the next pages for more info.](#)

Magellan Desktop Menu

Magellan Desktop offers many options to manage your server and folders from within the Magellan main menu. You can log on to your server, manage your folders and get server status messages sent by your server admin.

To access the Magellan menu, right click on the Magellan icon  located at right hand corner at bottom of your computer screen.



Resetting Magellan Configuration

Magellan stores user’s configuration on the client computer and on the server for each user account. To reset Magellan configuration click on the Windows Start button, select All Programs open the **EZblueSoftware** folder and select **Clear Magellan Settings**.

To reset the configuration stored on the server; from the server dashboard click on **Users & Group** button click on the user name, check **Reset Magellan Configuration**. and click apply.

Show Magellan Desktop
Show All EZblue Servers Manage All EZblue Servers
Manage Network Folders Disconnect Network Folders My Document Snapshot
Check for Update About Magellan
Reset Settings
Exit



5 Hamachi Remote Access

How do I connect to the server remotely over the Internet?

Before we answer the question we will explain two main topics that will assist you to understand the remote access issue. These topics are:

A- Security: Security is accomplished using virtual private network VPN and encryption. VPN is a connection between a remote client computer and the server that allows private data to be sent securely over the Internet.

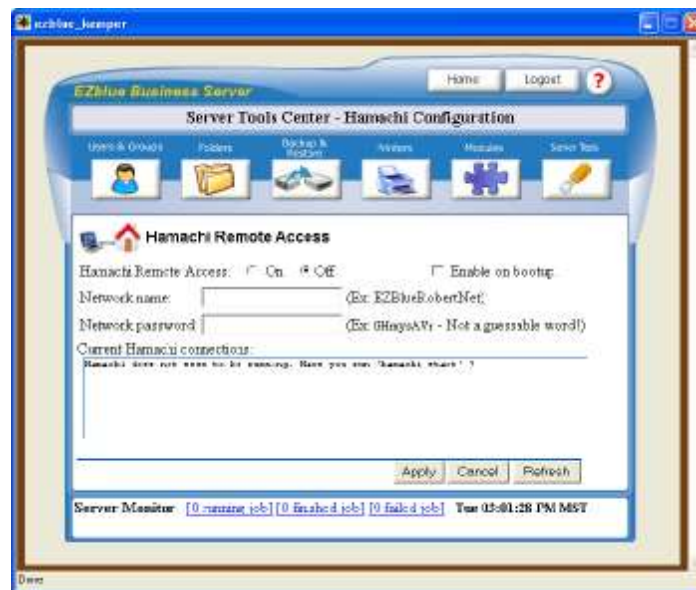
B- Speed: Most of us who use broadband link DSL or Cable modem believes we have high speed connections to the Internet. Actually, you only have high speed on the download side of our DSL or Cable modem. The upload side is relatively slow. This is important to understand because when you are communicating remotely with server, the server is sending the data back to you on the upload side (the low speed side). You can still copy and move your files from the server to you remote computer. However, it will be very slow if you try to open those files across the Internet.

Example: Copy a Word file from the server to your computer and open it with Word that should work fine. However, opening the same file over the Internet will be very slow. Therefore, always copy files to your PC work with them and then copy them back to the server. Remote users can access their server folders over the Internet provided you (the admin) have configured the Hamachi Remote Access Module in the Server Tools. To learn more about Hamachi remote access, go to www.hamachi.cc. You need to download the **free** Hamachi client software for each computer that will be connecting to the server remotely.

Step 1: Configuring the Hamachi module on the server side

- A- Click on the server tools button,
- B- Select the Hamachi Module
- C- Select **on** to enable the module
- D- Enter a name for your network and enter a password as showing in the image below.

The network name and the password will be used by the remote Hamachi client software to connect to the server. Check Enable on boot up option if you want the module to be active after a server boot up.

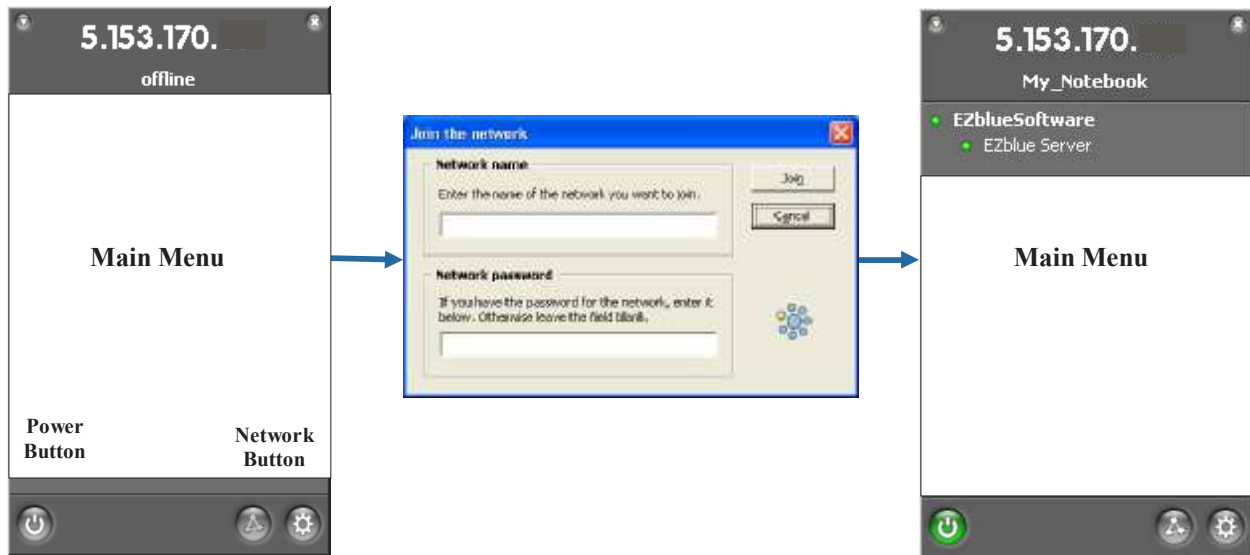


Continued on the next page.

Hamachi Remote Access


Step 2: Configuring the Hamachi software on the remote client side

- A- Download the Hamachi free basic program from <http://hamachi.cc>
- B- Install the program on the computer you will use to connect to the server remotely
- C- Click on the Hamachi icon to start the program. You will see the main Hamachi main menu image below
- D- Click on the Power button
- E- Click on the network button and select the Join Network option . Enter your Network name and password. The same one you used to configure Hamachi module on the server side. Click Join



Step 3 Connecting to the server

When the client PC connect to the server , the Hamachi Main Menu will display the server name or the IP address as showing above. Now you are ready to start Magellan and mount your folders

A- Start Magellan, Magellan will scan for the server. And ask you login . It will then mount the folders. If Magellan is unable to find the server , then you can add the server manually by clicking  button, then select Add Server (You need to use the IP address showing on the Hamachi to add the server.)

B- Once Magellan has mounted the folders you can click on each folder. **Remember to** copy files from the server folders to your PC or vice' versa and work on them. Do **not** open the file over the Internet it will be very slow.



When you are communicating remotely with your server, the server is sending the data back to you on the upload side of your DSL line and it may be slow. You can still copy and move your files from the server to your remote computer. Do not open those files across the Internet it will be very slow. Example of that would be to copy a Word file from the server to your notebook computer and open it with Word that would work fine. However, opening the same file over the Internet would be very slow or it may not work at all. This has nothing to do with the server or Hamachi. It has to do with the upload speed of the DSL or the cable modem service.

6

Web Server Setup

Overview:

In addition to using your server to store, share and back up your data, EZblue Business Server can also be configured to host your personal or business website and mail server. The web server module is included as a standard option in the server software. However, the mail server module is an add on module. All server modules are included and active in the demo version of the server software and ready for you to try.

Advantage of running your own Web server:

There are many advantages for hosting your own website and running you own web server. The first advantage is cost savings resulting from not having to pay a hosting company a monthly fee to host your website. The second advantage is flexibility. You can host many sites on your server., and be in control of all your data since your web files all reside on your server.

Things to consider before getting started:

Setting your web server is an easy task to perform on EZblue Server. However, there are few things that you need to understand and check before you get started. The list below should help you get started:

- A- Make sure you have enough disk space on your server. Any disk 80GB or higher should be more than enough for storing and hosting any standard website for a small business.
- B- High speed Internet, cable modem or DSL service should be sufficient unless you are expecting lots of traffic to your website.
- C- Basic understanding of your router and how to configure it to allow the traffic to pass to your server. This is generally called port forwarding or virtual server setup in your router settings.
- D- Fixed or dynamic IP. The IP address you are getting from your Internet service provider (ISP) is either a fixed IP address or it is dynamically assigned . If it is dynamically assigned then you need to get DDNS service to keep track of your IP address. You will need to set your router to forward the traffic from the public IP address assigned to your account to the server internal IP address.



- E- Last but not least, you will need a domain name like www.myweb.com so the world knows how to get to your website. You have to select a domain for your website and register with one of the many services out there like www.dyndns.com. We recommend dyndns because you can register your domain name and also set your DDNS service with them all at the same time.



Continued on the next page.

Web Server Setup

Configuring the web server module is very easy. All you need is to have admin level access to the server Dashboard and the Magellan Desk Top. Please follow the steps below to publish your website:

Step 1. Logon to the server

Logon to the server to access the server Dashboard. Make sure you log on as a user with admin privilege (see page 11 for more information).

Step 2. Add a Folder

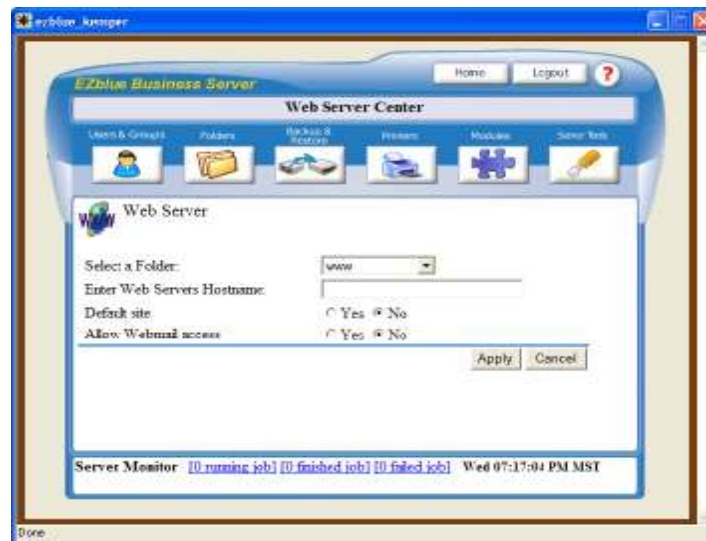
From the Server Dashboard click on Folders and select Add New Folder. Call the folder any name you would like for example **www** or **website**. This folder will be used to store your website files. Click Apply when done. For the rest of the web module setup we will use the folder (**www**) and the server IP address as an example to describe the rest of the steps. To find your server internal IP address click on Server Tools and select Network settings.



To host more than one website just add more folders. Each folder can have a different domain name assigned to it or many domains can point to the same folder. *If you do need to FTP your files click on Users & Group, click on the user name and select the folder that you want to FTP to.* Using your ftp client software connect to the server and use the user name and password to start the process.

Step 3. Configuring the Web Module

Click on Modules, Click on Web Server Module, Click on the New Web Site button. You will see the following page:



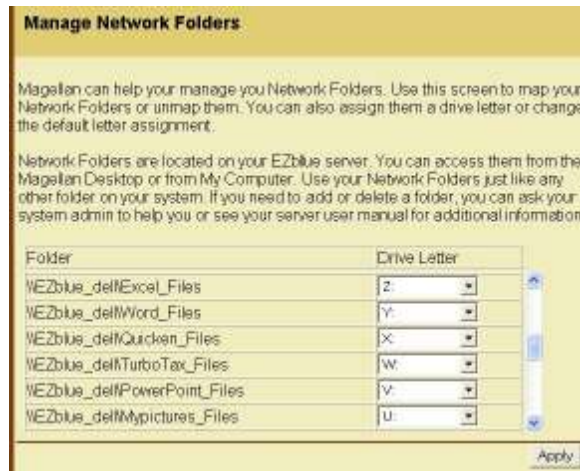
From the folders list select the folder (**www**) that will hold your website files. Enter an IP address, a host name or a domain name for you website. For testing you may use the server IP address. Example (192.168.0.201). Select Yes for Default if you want to make this website your main website. Select Allow Webmail access if you are planning on setting up a mail server later. Click Apply when done.

Continued on the next page.

Web Server Setup

Step 4. Copying the website files to the www folder

Before you can copy your website file to the www folder, you first need to have the folder mounted on your PC desktop. To do that use the Magellan Desk Top program. If you have Magellan already running right click on the Magellan icon located at right hand corner at bottom of your computer screen. Select Manage Network Folders. You should see the page below:

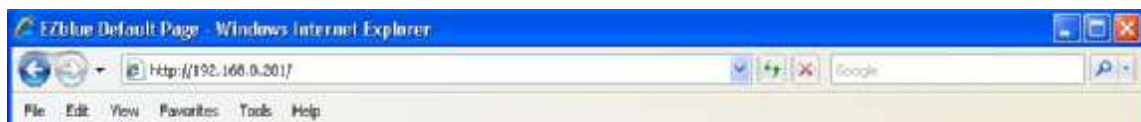


Once Magellan finds all the folders on the server, it will map them by assigning each folder a letter. Make sure the **www** folder has a drive letter assigned to it. If you wish to change the letter assignment do so and then click “Apply” when finished. Now you should see your **www** folder on the Magellan Desk Top as shown in the image below:



Click on the **www** folder in the Magellan desk top to open it.

Select all the websites file from the folder on your PC and copy them over to the **www** folder. Close the **www** folder. If you do need to FTP your files to the folder see page 17. Go to your Internet browser and enter your website domain name or the test IP address you assigned it. If you used the server IP address to test your website, then enter that. For example: <http://192.168.0.201> as showing bellow. Later you can go back to the web module and change it to the domain name that you registered. Your website should be up and running. Remember to set your router to forward the traffic to the server and to set your DDNS service if you are using dynamically assigned IP address by your ISP.



7

Support and FAQ

It is important to us that your questions are answered quickly, so we have created an online support center at: www.ezbluesoftware.com/support where you can ask questions and get help with installing and maintaining your server. Below is a list of frequently asked questions that may be helpful to you. If you are unable to find an answer to your question, feel free to email us and we will respond to you as quickly as possible. Your feedback will assist us in continually updating this section to better serve you.

What is included in the free CD trial?

The CD trial includes the EZblue Sever software and the EZblue Magellan Desktop. Use it for 30 days and if you decide to keep it go to our online shop at www.ezbluesoftware.com and order the license key you need for your specific version. You will be able to license the server online.

Can I connect the server to my wireless router?

Yes, connect the server using standard Ethernet cable to a port on your wireless router. Now any wireless client PC can reach the server.

Can I host multiple websites with multiple domains on EZblue Server?

Yes you can host more than one website and more than one domain on the server. You can also point many domains to the same website.

Can I SSH to the server ?

Yes you can. First Login to the server Dashboard and click on the "Server Tools" option, Click on Remote Support and enable it. Now you can connect to the server remotely using your SSH client. Only the server admin can login to the server with SSH. The admin ID is "root" and the password is the admin password entered during installation.

Do I need to keep a Monitor connected to the server after I finish installing the software?

No, you can disconnect the monitor after the server is up and running.

I have an accounting software package. Can I install it on the EZblue server?

No you can't install it on the server. However, you can have your accounting data or any other applications data files stored and shared via the server. Example of that is you can have your Turbo TAX program installed on your PC but when you save your files you save them to a folder on the server. This way your data is protected and backed up even if you change your computer.

Can I use Windows Vista™ client PC to connect to the server on my LAN?

Yes you can use Windows Vista™ client PC to connect to the EZblue server on the same network. We provide the Magellan Desk Top software to help you access your folders on the server and to manage the server from any computer connected to the server.

Can I run my own blog application like wordpress on the server?

Yes. EZblue is a complete Linux Apache Mysql Php (LAMP) based server. you can install and run most php scripts on the server.

Support and FAQ

I like the server software I want to keep it. How do I license My Server?

You have two options to license your server:

From the Server Dashboard click on the [Registration & Support Center](#) link make sure that your server is connected to the internet.

Option1- If the server is connected to the Internet, then from Registration and Support center select either purchase a monthly plan or a permanent license to continue to use your server software. Follow the steps and enter your selection and your payment information. Once you complete your order and check out your server will be licensed automatically online.

Option2- If the server is not connected to the Internet then you will need to purchase your license key from our shop at: www.ezbluesoftware.com/shop and use the Manual License option to license your server. from [Registration & Support Center](#) click on the Register button. On the screen under the Manual License option look up your hardware ID and write it down.. Go to our support center at: www.ezbluesoftware.com/support. Logon to your account, select license Software, enter your Hardware ID. number, enter the serial number and the number of user. Click on Get License button, a license number will be generated for you. Write the number down and go back to the server [Registration & Support Center](#) and click on the register button, in the Manual License section enter the information and click Register. Your server should be licensed now. If you need help just contact us and we will be glad to help.

I have a web site hosted with my ISP. Can I move it and hosted on EZblue Server?

Yes. All you have to do is copy all the website files form your account on the ISP server to your EZblue Server and set the web server module to host your own site. Remember to change the DNS settings of your domain name to point to the new location of your server (your public IP address). Your public IP address is provided by your DSL or cable modem Internet service provider.

When I start Magellan my folders have a red X mark on them and I can't open them.

Magellan stores user's configuration on the client computer and on the server for each user's account. You may need to reset it and start it again. To reset Magellan configuration click on the Start button, select All Programs open the **EZblueSoftware** folder and select **Clear Magellan Settings**. To reset the configuration stored on the server; from the server dashboard click on Users & Group button click on the user name, select **Reset Magellan Config.** and click apply.

Can I FTP files to the server?

Yes. From the server Dashboard click on users & groups, click on the username that needs to FTP to the server, select the folder that the files will be FTP to. Click apply. Now using an FTP client software you can log on to the server with the user ID and password and ftp the files. You will need to know your network public IP address and you need to set up your router to forward the public IP to the server internal IP address.

For additional help email us at our support center and we will be glad to help.

www.ezbluesoftware.com/support
Thank You For Choosing EZblue Software

Thank You For Choosing EZblue Software

For Technical Support email us

@

www.ezbluesoftware.com/support



PO Box 2521
Corrales, NM 87048
Phone: 505-994-9232

©2004-2008 EZblue Software Corp. All rights reserved. Trademarks or registered trademarks are the property of their respective holders. Specifications are subject to change without notice.